

2020

ANNUAL REPORT

FRANKLIN FOOD PANTRY

43 West Central Street
Franklin MA 02028
508-528-3115

www.franklinfoodpantry.org



LETTER FROM THE EXECUTIVE DIRECTOR

French writer Jean-Baptiste Alphonse Karr coined the phrase, “the more things change, the more they stay the same,” and this past year at The Pantry, we certainly felt that truth more than ever. Life may have shut down for many, but The Pantry remained open to the many neighbors who needed us more than ever.

What changed?

- When our doors had to physically close to our neighbors, we rapidly switched to a twice a week curbside pick up. Our neighbors received a choice of three proteins, fresh produce (often from Franklin’s own community gardens) a bag of shelf stable goods and a special bag of food designed just for kids.
- Instead of monthly scheduled times, neighbors could come weekly.
- We added new programs such as Home Delivery and Kids Bags for families.
- We developed new supply chain methods, providing over 30% more fruits and vegetables to our neighbors despite the temporary closure of many partner programs.
- We reinvented roles for our volunteers such as filling bags, calling neighbors, delivering to homes and contactless distribution, keeping volunteers safe while supporting our neighbors.
- We shifted our larger fundraisers to virtual events, including a reimagined Party for The Pantry, an online Empty Bowls event and auction as well as a virtual Turkey Trot.



LETTER FROM THE EXECUTIVE DIRECTOR CONTINUED

What stayed the same?

- We continued to see the spirit of our community shine through in support of our neighbors - your generosity was unparalleled!
- We still connected with our neighbors to not only provide food but to offer support or just share a friendly face (even if it was masked.)
- We delivered weekend backpacks to 57 Franklin school children weekly to give them meals and snacks over the weekend.
- We purchased a new building at 138 East Central Street, but for now we are staying at our current location while we finalize plans and launch our Capital Campaign.
- We held our annual Thanksgiving and December holiday distribution serving over 200 hundred families for each.
- We undertook strategic visioning and shifted staff and Board members into positions that capitalized on their expertise while addressing the changing needs of our community. While there may be different titles with the names, the same dedicated people are running The Pantry and working hard for our neighbors.
- The need for The Pantry did not change – it grew. Compared to 2019, we served 18% more households, with a 36% increase in number of children served.

While we don't always know what will happen, this year taught us one thing: the need for compassion will never change. Thank you for sharing your compassion at unprecedented levels this year. We are honored to work with you every day to assist our neighbors.



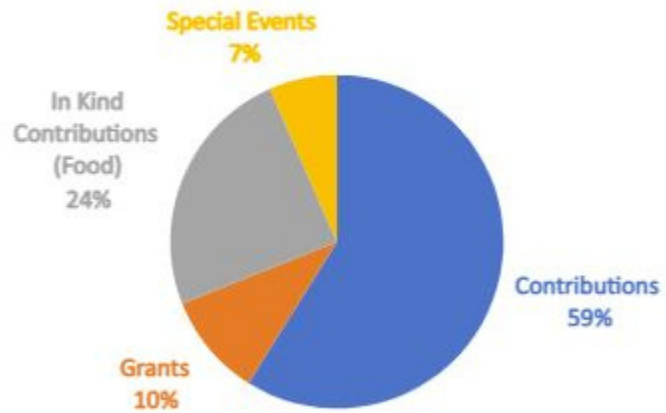
Lena Powderly

FY20

REVENUE SOURCES

The Franklin Food Pantry depends on a wide variety of donations to help feed our neighbors. Every dollar counts - from the lemonade stand to the food elf donation to the large corporate contributions. All your support feeds the over 1400 individuals that come to the pantry.

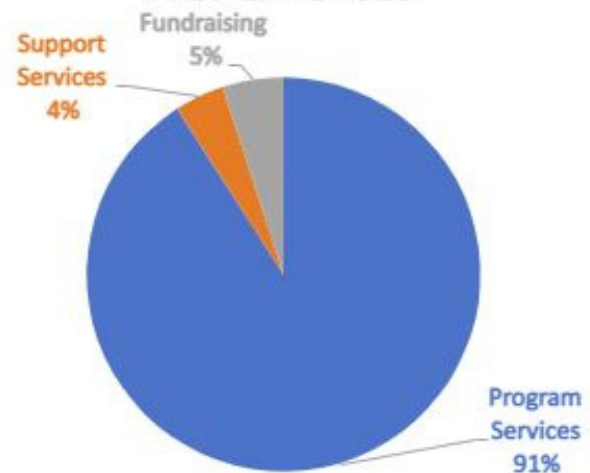
FY20 REVENUES



EXPENSE CATEGORIES

91% of all contributions go directly to serving our neighbors. Your donation helps us increase access to food for homebound neighbors, improve nutrition for children on the weekend and expand healthy produce options.

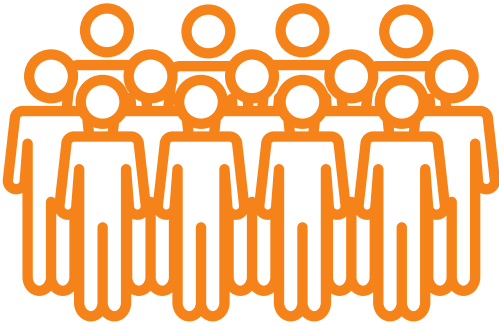
FY20 EXPENSES



What it takes to feed 1400 people a year



40,343 pounds
of produce



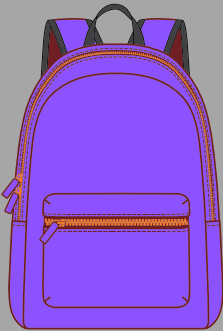
2934 donors



243,112 pounds
of food



1,779.55 volunteer
hours
114 volunteers



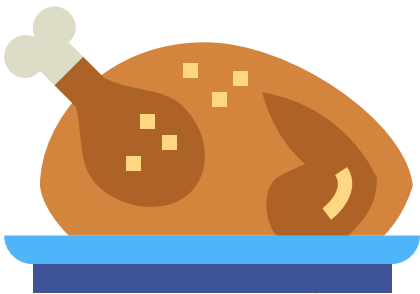
57 weekend
backpacks
delivered weekly to
Franklin school
children



1488 pounds
of groceries
delivered



27 foundations



225
Thanksgiving
and 231
December
holiday meals



113 businesses

45 community
and civic
groups



15 schools



Thank you for your support!

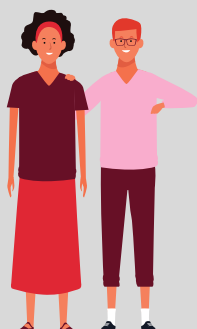
Our Neighbors



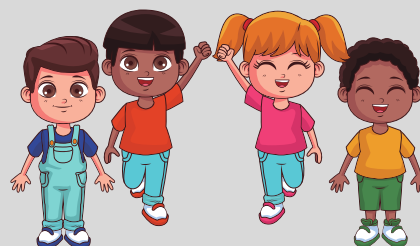
598 Households



208 Seniors



819 Adults



408 Children

Our Programs

Weekend Backpack Program

Weekly backpacks to Franklin students filled with healthy food and snacks for the weekend

Mobile Delivery

Weekly home delivery service for neighbors who cannot get to the Pantry

Monthly Delivery

Delivery to a central location to provide food and supplies to many neighbors at once

Carts for Clients

Portable carts provided for our neighbors who must walk to the Pantry and need extra assistance

Board Members



(L to R): Jim Roche, Acting Chair and Treasurer, Susan Dewsnap, Chris Kilburn, Roberta DeBaggis Trahan, Vicki Coates, Nancy Schoen, Suzanne Gendreau, Clerk

Staff



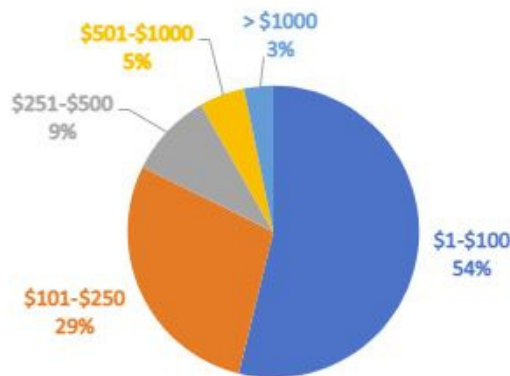
Top row (L to R): Sue Kilcoyne, Laura Often, Tina Powderly, Kim DiMarino
 Bottom row (L to R): Lynn Calling, Marci Duffy, Andy Keesan, Molly Kilburn
 Missing from photo: Amy Cataldo

Our Donors

The Franklin Food Pantry is not funded by the Town of Franklin. We are grateful to our state delegation for funding statewide food insecurity initiatives. We also are grateful to all of our donors who make feeding our neighbors possible.

Close to 3000
donors

DONOR PROFILE



Over 100 GEMS
(monthly
donor program)

1,200 Food Elf
Donors

Almost 1/2 of our donors
gave < \$40

Our Mission

To alleviate food insecurity and compassionately empower our community through resources and collaboration.



Staff and Board members at Empty Bowls 2021