



FRANKLIN
FOOD
PANTRY

FY 21

ANNUAL REPORT

508-528-3115

franklinfoodpantry.org

FRANKLIN FOOD PANTRY FARMERS MARKET



P. O. BOX 116
Franklin MA 02038
508-528-3115

www.franklinfoodpantry.org



LETTER FROM THE EXECUTIVE DIRECTOR

“Food brings people together on many different levels. It’s nourishment of the soul and body; it’s truly love.” – Giada De Laurentiis

Whether in celebration of life’s important milestones or in the simple daily routine of preparing and sharing a family dinner, food brings us together and gives us common ground and shared memories. Giving food to another human being is truly one of the most loving things we can do for each other.

We may take for granted the fact that food is a daily part of our lives, but in our community, almost 1,100 people face food insecurity. The pandemic has only made it harder for our neighbors to gather with their families around healthy appealing meals. Since April 2020, food prices have increased an average of 3.6% for food bought for at-home consumption on a monthly year-over-year basis.* Increased food costs combined with the stress of job insecurity, the threat of illness, the rising gas costs, and shortages of consumer goods has made what we do at the Franklin Food Pantry more important than ever.

The Franklin Food Pantry is more than a place that distributes food, we are a port in a storm for our neighbors as they navigate health, family, and financial challenges.

*“What is Driving the Increase in Food Costs,” Purdue University, November 2021

LETTER FROM THE EXECUTIVE DIRECTOR CONTINUED

In 2021, we created and expanded opportunities for our neighbors to help them both physically and emotionally:

- Implemented three simultaneous distribution models (curbside, in person, and home delivery) to maximize access and options for neighbors in various circumstances
- Introduced an onsite farmer's market to provide access to healthy fresh fruits, vegetables, and herbs
- Gave families holiday meal kits during the summer, at Thanksgiving, and during year-end holidays that they could customize to their own family traditions
- Provided in-person office hours to assist neighbors in accessing support for their everyday challenges

All our programs foster a sense of community, health, and love for our neighbors during a year filled with stress, change, and uncertainty. 2022 brings more changes and uncertainty, but at the Pantry, we will continue to be an anchor for our neighbors.

Thank you to all of you for your support, kindness, and generosity as we serve our community. We are more than a place that gives out food; we give out love.

Love Pantry

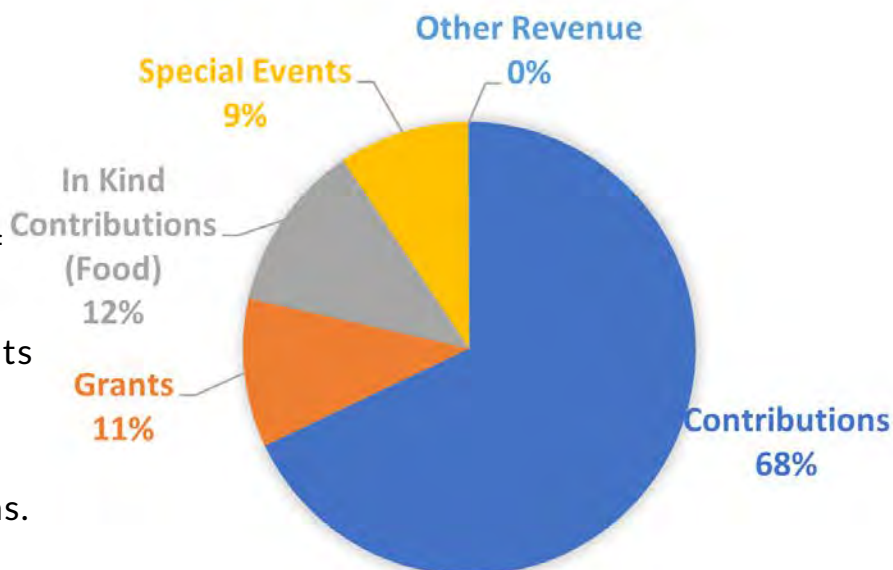


FY 21*

REVENUE SOURCES

The Franklin Food Pantry depends on a wide variety of donations to help feed our neighbors. Every dollar counts - from the road race to the food elf campaigns to the large corporate contributions. All your support feeds the almost 1100 individuals that come to the pantry.

FY21 REVENUES



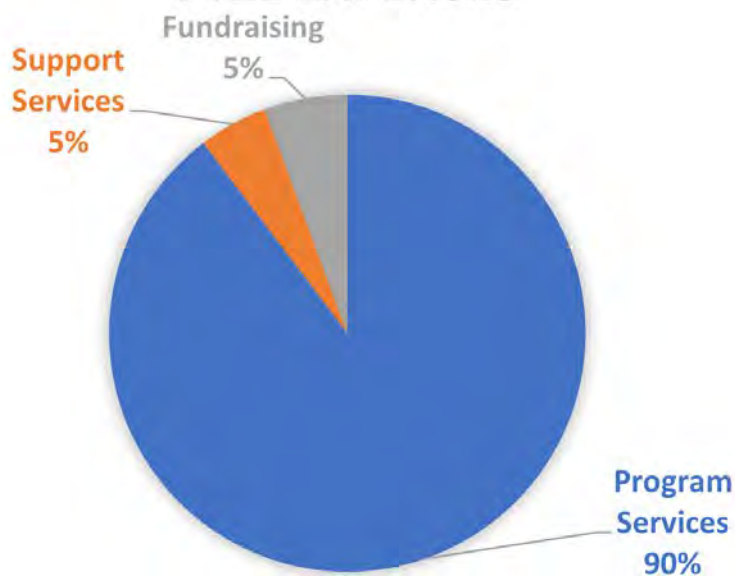
EXPENSE CATEGORIES

90% of all contributions go directly to serving our neighbors, including purchasing food, processing product donations, and securing staff and volunteers to provide services. Your donation helps us increase access to food for homebound neighbors, expand our distribution options to have a hybrid distribution, and increase healthy produce options.

Looking ahead:

Our state delegation secured \$50K in MA's state budget FY22 food security earmark.

FY21 EXPENSES

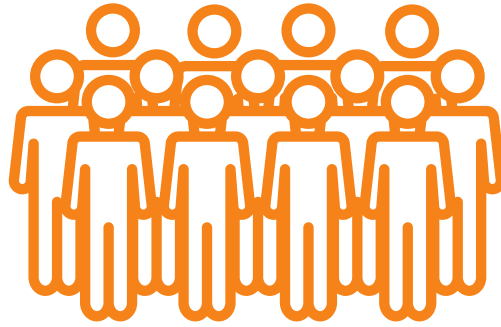


*Source: unaudited financials

What it takes to feed 1097 people a year



25,850 bags of food given



2558 individual donors



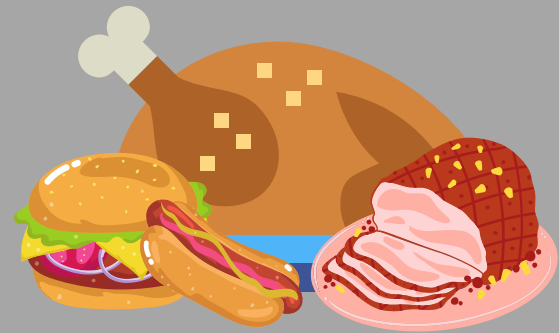
1695 home delivery bags of food



4153 volunteer hours
163 volunteers

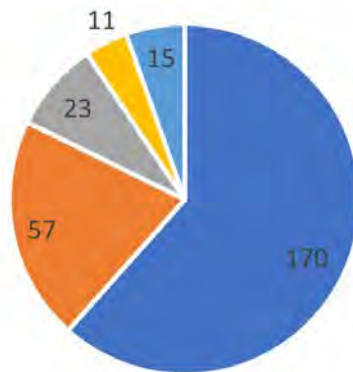


2670 weekend backpacks delivered to Franklin school children



625 July, November and December holiday meals

276 different entities support our mission



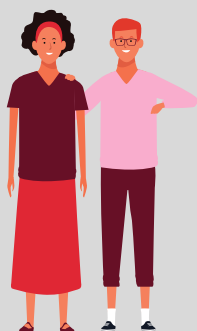
■ Businesses ■ Community/Civic Groups ■ Matching Gifts
■ Schools ■ Foundations/Grants

Thank you for your support!

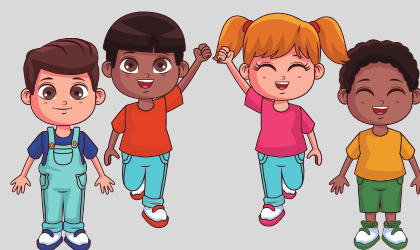
Our Neighbors



177 Seniors



625 Adults



295 Children

Our Programs

Weekend Backpack Program

Weekly backpacks to Franklin students filled with healthy food and snacks for the weekend

Home Delivery

Weekly home delivery service for neighbors who cannot get to the Pantry

Hybrid Distribution

In-person and curbside distribution for our neighbors to provide safe options for food pick up

Mobile Pantry

Delivery to a central location to provide food and supplies to many neighbors at once

On-Site Farmer's Market

Fresh produce from our own community garden available to neighbors

Board Members



(L to R): Jim Roche, Acting Chair and Treasurer, Susan Dewsnap, Chris Kilburn, Roberta DeBaggis Trahan, Vicki Coates, Nancy Schoen, Suzanne Gendreau, Clerk

Staff

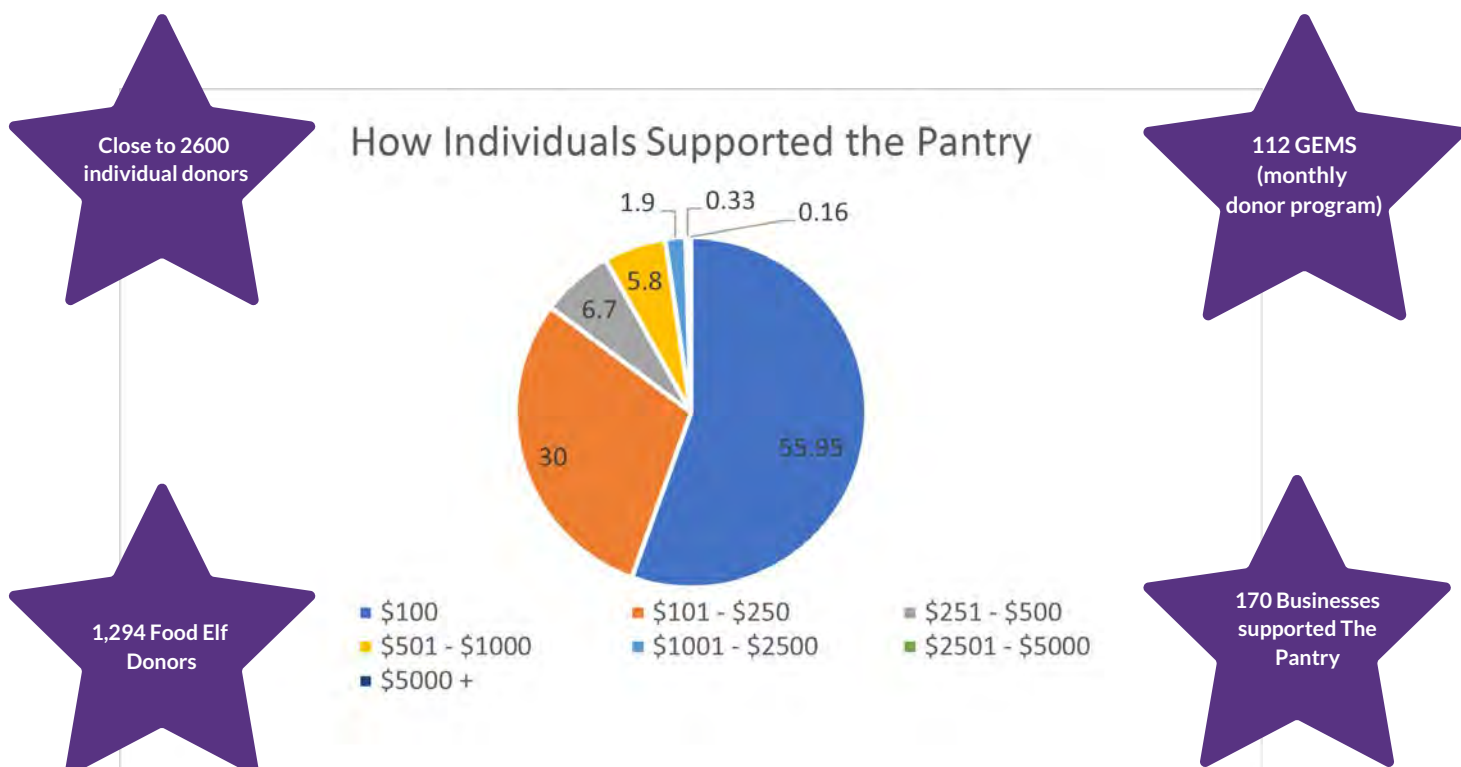


Back row (L to R): Marsha Tait, Andy Keesan, Molly Kilburn, Kayla Sines, Laura Du, Marci Duffy

Bottom row (L to R): Tina Powderly, Laura Often, Anne McGillis

Our Donors

The Franklin Food Pantry is not funded by the Town of Franklin. We are grateful to our state delegation for funding statewide food insecurity initiatives. We also are grateful to all of our donors who make feeding our neighbors possible.



Our Mission

To alleviate food insecurity and compassionately empower our community through resources and collaboration.



Staff and volunteers supporting Hunger Action Day 2021